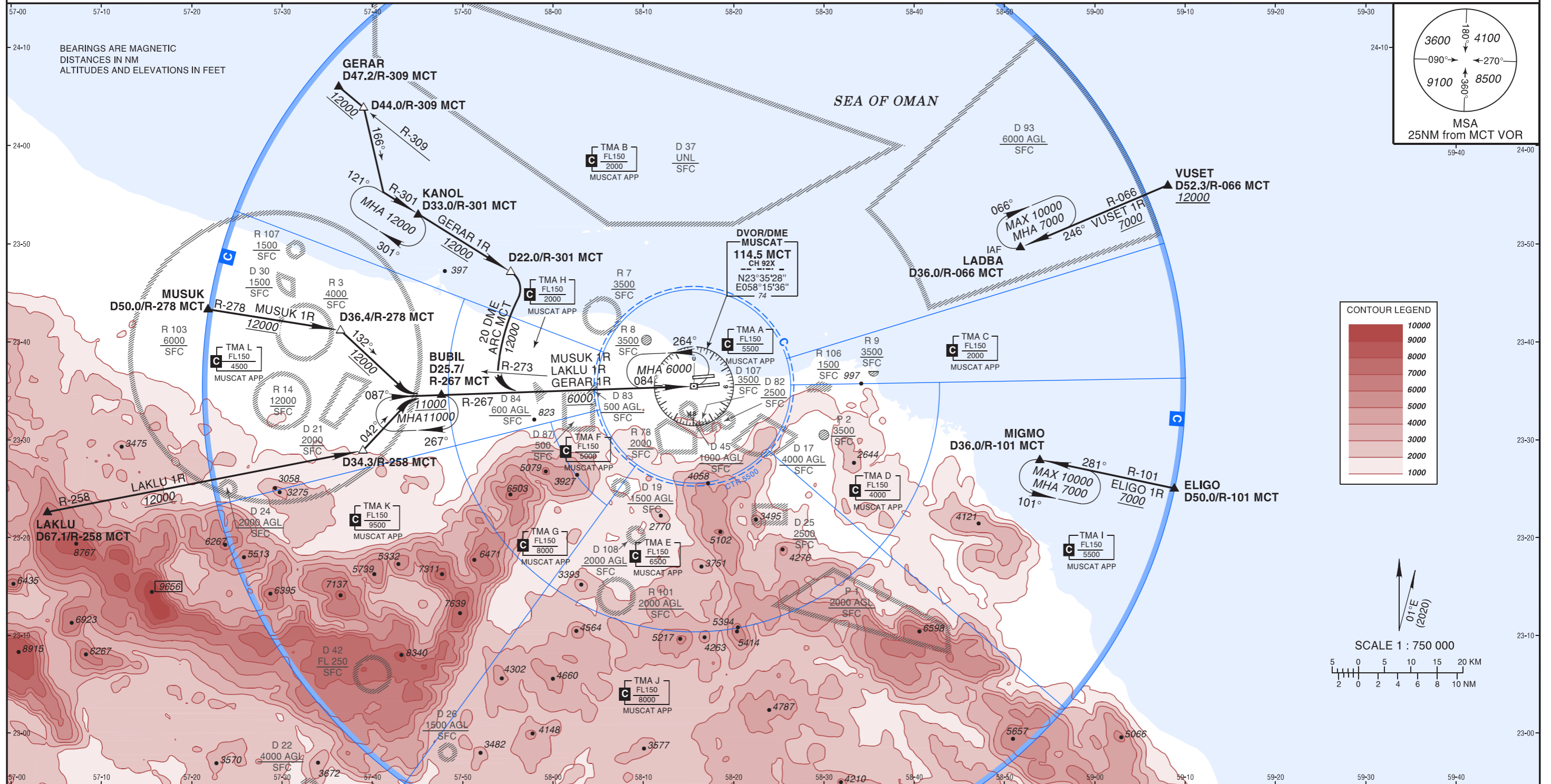


STANDARD ARRIVAL CHART INSTRUMENT (STAR) - ICAO
AD ELEV 49 FT
Trans Alt 13000
Trans Level FL150

ATIS 126.800
TWR 118.825
APP/RAD 121.200
GND 121.800

MUSCAT/Muscat Intl
OMAN
RWY 26R

VUSET 1R, ELIGO 1R, LAKLU 1R, MUSUK 1R, GERAR 1R ARRIVAL



STAR	ROUTING
VUSET 1R	Follow R-066 MCT to LADBA at or above 7000.
ELIGO 1R	Follow R-101 MCT to MIGMO at or above 7000.
LAKLU 1R	Follow R-258 MCT to D34.3/R-258 MCT at or above 12000. Turn LEFT on track 042° to intercept and follow R-267 MCT to BUBIL at or above 11000 and to MCT DVOR/DME at or above 6000.
MUSUK 1R	Follow R-278 MCT to D36.4/R-278 MCT at or above 12000. Turn RIGHT on track 132° to intercept and follow R-267 MCT to BUBIL at or above 11000 and to MCT DVOR/DME at or above 6000.
GERAR 1R	Follow R-309 MCT to D44.0/R-309 MCT at or above 12000. Turn RIGHT on track 166° to intercept and follow R-301 MCT to KANOL then to D22.0/R-301 MCT. Turn RIGHT to follow 20 DME ARC MCT. At R-273 MCT turn LEFT to intercept and follow R-267 MCT at or above 6000 to MCT DVOR/DME.